

8" Membrane Pressure Vessel – Spare Parts List
1. Individual Components
A. Side Port Vessel Components Only
I. Aluminum Bearing Plates

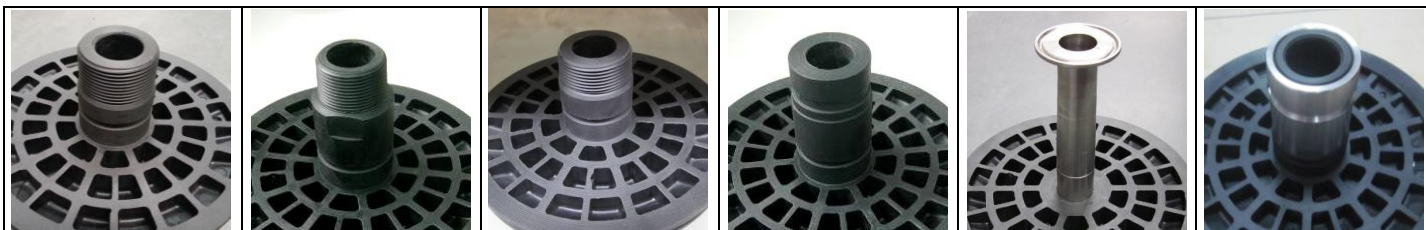

Aluminum Bearing Plate, SB-211, 6061-T6	Part No.
150 PSI Pressure Vessel	20058
300 PSI Pressure Vessel	20059
450 PSI Pressure Vessel	20060
600 PSI Pressure Vessel	20061
1000 PSI Pressure Vessel	20062
1200 PSI Pressure Vessel	20435-1

II. Thrust Cone


Thrust Cone, PF062-3	Part No.
All Pressure Vessels, Side Port	10192

III. Permeate Ports

- Option H/J/V/S/F/G
- Option M
- Option N
- Option UF
- Option W/K
- Option E



Option H/J/V/S/F/G	Option M	Option N	Option UF	Option W/K	Option E
Union Adaptor G 1 1/2"	Male Thread NPT 1 1/4	Male Thread NPT 1 1/2"	Mechanical Coupling 1.5"	Sanitary Connection ★	

Part No.					
150P	10069	10084	10843	10501	10315 ★
300P	10070	10085	10844	10430	10315 ★
450P	10071	10086	10845	10502	10315 ★
600P	10072	10087	10846	10503	11247
1000P	10073	10088	10847	10504	
1200P	10602	10604	10848	10605	

★ Note: Part No. 10315 is for the plastic portion of the permeate port only.
SST Sanitary Connection parts need to be ordered separately, see page 7, section VI.

IV. Side Port Parts – Generation 2

Side Port (SS316L for 150P to 450P Side Port, Duplex SS for 600P to 1200P Side Port)



	R (1.5")	S (2")	T (2.5")	U (3")	V (4")
	Part No.	Part No.	Part No.	Part No.	Part No.
150P/300P	20085	20083	20084	20385	20477
450P	20089	20087	20088	20380	N/A
600P	20483	20481	20482	20484	N/A
1000P	20386-1	20387-1	20388-1	20389-1	N/A
1200P	20381-1	20382-1	20383-1	20384-1	N/A

Side Port Seal (EPDM)



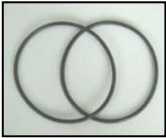
	R (1.5")	S (2")	T (2.5")	U (3")	V (4")
	Part No.	Part No.	Part No.	Part No.	Part No.
150P/300P	10615	10613	10614	10709	10565
450P	10615	10613	10614	10709	N/A
600P/1000P /1200P	10493	10495	10497	10491	N/A

Side Port Gasket Seal (EPDM)



	R (1.5")	S (2")	T (2.5")	U (3")	V (4")
	Part No.	Part No.	Part No.	Part No.	Part No.
150P/300P	N/A	N/A	N/A	10710	10564
450P	N/A	N/A	N/A	10710	N/A
600P/1000P /1200P	10494	10496	10498	10490	N/A

Side Port O-Ring Seal (EPDM)



	R (1.5")	S (2")	T (2.5")	U (3")	V (4")
	Part No.	Part No.	Part No.	Part No.	Part No.
All Pressure	10423	10424	10425	10392	10563

Side Port Retaining Ring (SS316)



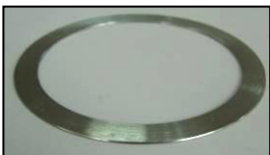
	R (1.5")	S (2")	T (2.5")	U (3")	V (4")
	Part No.	Part No.	Part No.	Part No.	Part No.
150P/300P/450P	20113	20111	20112	N/A	N/A

Side Port Lock Nut (SS316)



	R (1.5")	S (2")	T (2.5")	U (3")	V (4")
	Part No.	Part No.	Part No.	Part No.	Part No.
150P/300P/450P	N/A	N/A	N/A	20458	20464
600P/1000P /1200P	20455	20456	20457	20458	N/A

Side Port Nut Shim (SS316)



	R (1.5")	S (2")	T (2.5")	U (3")	V (4")
	Part No.	Part No.	Part No.	Part No.	Part No.
150P/300P/450P	N/A	N/A	N/A	20286	20465
600P/1000P /1200P	20279	20280	20285	20286	N/A

Side Port Nut Screw (SS316)



	R (1.5")	S (2")	T (2.5")	U (3")	V (4")
	<u>Part No.</u>	<u>Part No.</u>	<u>Part No.</u>	<u>Part No.</u>	<u>Part No.</u>
150P/300P/450P	N/A	N/A	N/A	20439	N/A
600P/1000P /1200P	20439	20439	20439	20439	N/A

Side Port Washer (SS316)



	R (1.5")	S (2")	T (2.5")	U (3")	V (4")
	<u>Part No.</u>	<u>Part No.</u>	<u>Part No.</u>	<u>Part No.</u>	<u>Part No.</u>
1000P/1200P	N/A	N/A	N/A	20303	N/A

V. Side Port Parts - Generation 1

Side Port (SS316L for 150P to 450P Side Port, Duplex SS for 600P to 1200P Side Port)



	R (1.5")	S (2")	T (2.5")	U (3")
	<u>Part No.</u>	<u>Part No.</u>	<u>Part No.</u>	<u>Part No.</u>
150P/300P	20085	20083	20084	20168
450P	20089	20087	20088	20328
600P	20093	20091	20092	20202
1000P	20097	20095	20096	20161
1200P	20164	20162	20163	20160

Side Port Curved Seal (EPDM)



	R (1.5")	S (2")	T (2.5")	U (3")
	<u>Part No.</u>	<u>Part No.</u>	<u>Part No.</u>	<u>Part No.</u>
150P/300P/450P	10169	10167	10168	10162
600P	10169	10167	10168	10435
1000P /1200P	10165	10163	10164	10162-1

Side Port Square Seal (EPDM)



	R (1.5")	S (2")	T (2.5")	U (3")
	<u>Part No.</u>	<u>Part No.</u>	<u>Part No.</u>	<u>Part No.</u>
150P/300P/450P	10155	10153	10154	10159
600P	10155	10153	10154	10160-1
1000P /1200P	10151	10149	10150	10160

Side Port O-Ring Seal (EPDM)



	R (1.5")	S (2")	T (2.5")	U (3")
	<u>Part No.</u>	<u>Part No.</u>	<u>Part No.</u>	<u>Part No.</u>
All Pressure	10423	10424	10425	10392

Side Port Retaining Ring (SS316)



	R (1.5")	S (2")	T (2.5")	U (3")
	<u>Part No.</u>	<u>Part No.</u>	<u>Part No.</u>	<u>Part No.</u>
All Pressure	20113	20111	20112	20125

B. End Port Vessels Only Components

I. Aluminum Bearing Plates



Aluminum Bearing Plate, SB-211, 6061-T6	Part No.
150 PSI Pressure Vessel	20065
300 PSI Pressure Vessel	20066
450 PSI Pressure Vessel	20067
600 PSI Pressure Vessel	20068
1000 PSI Pressure Vessel	20069
1200 PSI Pressure Vessel	20069

II. Thrust Cone



Thrust Cone, PF062-3	Part No.
All Pressure Vessels, End Port	10193

III. Permeate Ports

- Option H/J/V/S/F/G
- Option M
- Option N

			
Option H/J/V/S/F/G	Option M	Option N	
Union Adaptor G 1 1/2"	Male Thread NPT 1 1/4"	Male Thread NPT 1 1/2"	
Part No.			
150P	10113	10116	11154
300P	10093	10108	11155
450P	10094	10109	11156
600P	10096	10111	11157
1000P	10097	10112	11158
1200P			

IV. End Port Parts

Feed/Concentrate Port (SS316L for 150P to 450P End Port, Duplex SS for 600P to 1200P End Port)



<u>Pressure Rating</u>	<u>Part No.</u>
150 PSI	20105
250 PSI / 300 PSI	20101
400 PSI / 450 PSI	20102
600 PSI	20103
1000 PSI / 1200 PSI	20104-1

Feed/Concentrate Retaining Ring (316)



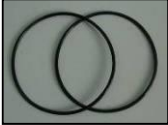
<u>Pressure Rating</u>	<u>Part No.</u>
150 PSI / 250 PSI / 300 PSI	20108

Feed/Concentrate Retaining Ring (316)



<u>Pressure Rating</u>	<u>Part No.</u>
400 PSI / 450 PSI	20119
600 PSI	20120
1000 PSI / 1200 PSI	20118

Feed/Concentrate Seal (EPDM)



<u>Pressure Rating</u>	<u>Part No.</u>
All Pressure	10180

C. Side Port and End Port Vessels Common Parts

I. Three Turn Retaining Ring

Three-Turn Retaining Ring (316)



<u>Pressure Rating</u>	<u>Part No.</u>
150 PSI - 600 PSI	20025
1000 PSI	20024
1200 PSI	20434

II. Head Seal

Head Seal (EPDM)



<u>Pressure Rating</u>	<u>Part No.</u>
All Pressure	10175

III. Permeate Port Parts

Permeate Port Retaining Ring (316)



<u>Pressure Rating</u>	<u>Part No.</u>
All Pressure	20107

Permeate Port Seal (EPDM)



<u>Pressure Rating</u>	<u>Part No.</u>
All Pressure	10181

IV. Adaptor Parts

Adaptor (ABS)



	<u>W/Hole</u> <u>Part No.</u>	<u>W/O Hole</u> <u>Part No.</u>
M 1.125"	10125	10130



M 1.128"	11192	
M 1.5"	10128	10129
M 1.187"	10132	



F 1.5"		10131	
F 1.25" -1	Nitto Denko	10133	
F 1.25" -2	Nitto Denko	10134	10489
F 1.25" -1	Ropur SU	10135	10137
F 1.25" -2	Ropur SU	10136	10138
F 1.25" -1	MEM-001	10146	
F 1.25" -2	MEM-001	10147	

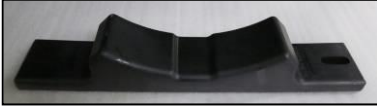
Adaptor Seal (EPDM)



	<u>Part No.</u>
M 1.125	10182
M 1.128	11384
M 1.5"	10183
M 1.187"	10398
F 1.5"	10184
F 1.25"	10185

V. Saddle Parts

Saddle (TPU)



<u>Pressure Rating</u>	<u>Part No.</u>
All Pressure	10141-1

Strap (304) & **Strap Nut** (Hpb51-9)



<u>Pressure Rating</u>	<u>Part No.</u>
All Pressure	20123

Strap Screw (SS)



<u>Pressure Rating</u>	<u>Part No.</u>
All Pressure	20129

Strap Protective Jacket (Soft PVC)



<u>Pressure Rating</u>	<u>Part No.</u>
All Pressure	10188

VI. Sanitary Connection Parts

Sanitary Connection Retaining Ring (316)



<u>Pressure Rating</u>	<u>Part No.</u>
All Pressure	20126

Sanitary Connection Seal (EPDM)



<u>Pressure Rating</u>	<u>Part No.</u>
All Pressure	10331

Sanitary Connection Snap Ring (316)



<u>Pressure Rating</u>	<u>Part No.</u>
All Pressure	20023

Sanitary Connection (316)



	1"	1.5"
<u>Pressure Rating</u>	<u>Part No.</u>	<u>Part No.</u>
150 PSI	20595	20602
300 PSI	20440	20603
450 PSI	20596	20604

Sanitary Plug (PVC)



<u>Pressure Rating</u>	<u>Part No.</u>
300 PSI	10591

VII. Union Adaptor Parts

Union Nut (PVC)



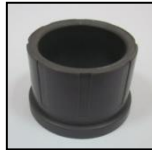
<u>Pressure Rating</u>	<u>Part No.</u>
All Pressure	10057

Union Flat Seal (EPDM)

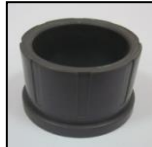


<u>Pressure Rating</u>	<u>Part No.</u>
All Pressure	11264

Union Adaptors



	<u>Part No.</u>
Socket 32mm O.D. – (H)	10059



	<u>Part No.</u>
Socket 1.32" O.D. – (J)	10058



	<u>Part No.</u>
Female Thread NPT 1" – (F)	10852



	<u>Part No.</u>
Female Thread Rp 1" – (G)	10853



	<u>Part No.</u>
Mechanical Coupling 1" – SS – (S)	20020 (Side Port)
Mechanical Coupling 1" – SS – (S)	20020-1 (End Port)



	<u>Part No.</u>
Mechanical Coupling 1" – ABS – (V)	10055 (Side Port)
Mechanical Coupling 1" – ABS – (V)	10055-1 (End Port)



	<u>Part No.</u>
Union Plug	10056

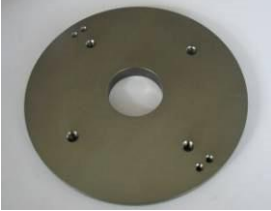


2. Spare Parts Kit Option

A. Side Port Vessels Only Kits

I. *Complete Head Assembly*

- Permeate Port Kits
- Aluminum Bearing Plate
- Retaining Block
- Allen Screw

*****Three Turn Retaining Ring Not Included – Order Separately (20024, 20025, or 20434 Model Dependent)**

Permeate Port Kits	Aluminum Bearing Plate	Retaining Block (20183-1)	Allen Screw (20833)
\			

Complete Head Assembly Kit Options

	<u>150PSI</u>	<u>300PSI</u>	<u>450PSI</u>	<u>600PSI</u>	<u>1000PSI</u>	<u>1200PSI</u>
H	70524	70525	70526	70527	70528	70529
J	70550	70551	70552	70553	70554	70555
V	70518	70519	70520	70521	70522	70523
S	70576	70577	70578	70579	70580	70581
F	70500	70501	70502	70503	70504	70505
G	70512	70513	70514	70515	70516	70517
M	70506	70507	70508	70509	70510	70511
N	70582	70583	70584	70585	70586	70587
UF	70556	70557	70558	70559	70560	70561
W	70572	70573	70598	\	\	\
K	70574	70575	70599	\	\	\

II. Permeate Port Kits

- Permeate Port
- Head Seal
- Permeate Port Retaining Ring
- Permeate Port Seal
- Union Adaptor (For H/J/V/S/F/G port option only)
- Union Nut (For H/J/V/S/F/G port option only)
- Union Flat Seal (For H/J/V/S/F/G port option only)

Permeate Port Kit Options

	<u>150PSI</u>	<u>300PSI</u>	<u>450PSI</u>	<u>600PSI</u>	<u>1000PSI</u>	<u>1200PSI</u>
H	70616	70617	70618	70619	70620	70621
J	70622	70623	70624	70625	70626	70627
V	70640	70641	70642	70643	70644	70645
S	70646	70647	70648	70649	70650	70651
F	70628	70629	70630	70631	70632	70633
G	70634	70635	70636	70637	70638	70639
M	70652	70653	70654	70655	70656	70657
N	70658	70659	70660	70661	70662	70663
UF	70664	70665	70666	70667	70668	70669
W	70670	70671	70888			
K	70672	70673	70889			

III. Complete MPV Seal/Retaining Ring Kits (Enough for 4 side ports per vessel)

Size	MPV Seal Kits-150P/300P/450P			
	Kits code	Part No. & Description	QTY	
1.5"	10702	10169	Side Port Curved Seal - Generation 1	4
		10155	Side Port Square Seal - Generation 1	4
		10615	Side Port Seal - Generation 2	4
		10423	Side Port O-Ring Seal - Generation 2	8
		20113	Retaining Ring	8
		10175	Head Seal	2
		10181	Permeate Port Seal	2
		10182	Adaptor Seal	4
		10702	1.5" Side Port Seal Kit - Part Identification Sheet	1
2"	10704	10167	Side Port Curved Seal - Generation 1	4
		10153	Side Port Square Seal - Generation 1	4
		10613	Side Port Seal - Generation 2	4
		10424	Side Port O-Ring Seal - Generation 2	8
		20111	Retaining Ring	8
		10175	Head Seal	2
		10181	Permeate Port Seal	2
		10182	Adaptor Seal	4
		10704	2" Side Port Seal Kit - Part Identification Sheet	1
2.5"	10706	10168	Side Port Curved Seal - Generation 1	4
		10154	Side Port Square Seal - Generation 1	4
		10614	Side Port Seal - Generation 2	4
		10425	Side Port O-Ring Seal - Generation 2	8
		20112	Retaining Ring	8
		10175	Head Seal	2
		10181	Permeate Port Seal	2
		10182	Adaptor Seal	4
		10706	2.5" Side Port Seal Kit - Part Identification Sheet	1
3"	10703	10162	Side Port Curved Seal - Generation 1	4
		10159	Side Port Square Seal - Generation 1	4
		10499	Side Port Seal - Generation 2 (300P)	4
		10447	Side Port Gasket Seal - Generation 2 (300P)	4
		10709	Side Port Seal - Generation 2 (300P/450P)	4
		10710	Side Port Gasket Seal - Generation 2 (300P/450P)	4
		10392	Side Port O-Ring Seal - Generation 2	8
		20125	Retaining Ring	8
		20458	Side Port Nut	4
		20286	Side Port Nut Shim	4
		20439	Side Port Nut Screw	8
		10175	Head Seal	2
		10181	Permeate Port Seal	2
		10182	Adaptor Seal	4
		10703	3" Side Port Seal Kit - Part Identification Sheet	1

Size	Side Port Seal Kits-600P/1000P/1200P			
	Kits code	Part No. & Description	QTY	
1.5"	10901	10169	Side Port Curved Seal - Generation 1 (600P)	4
		10155	Side Port Square Seal - Generation 1 (600P)	4
		10165	Side Port Curved Seal - Generation 1 (1000P/1200P)	4
		10151	Side Port Square Seal - Generation 1 (1000P/1200P)	4
		10493	Side Port Seal - Generation 2	4
		10494	Side Port Gasket Seal - Generation 2	4
		10423	Side Port O-Ring Seal - Generation 2	8
		20113	Retaining Ring	4
		20455	Side Port Nut	4
		20279	Side Port Nut Shim	4
		20439	Side Port Nut Screw	8
		10175	Head Seal	2
		10181	Permeate Port Seal	2
		10182	Adaptor Seal	4
		10901	1.5" Side Port Seal Kit - Part Identification Sheet	1
2"	10902	10167	Side Port Curved Seal - Generation 1 (600P)	4
		10153	Side Port Square Seal - Generation 1 (600P)	4
		10163	Side Port Curved Seal - Generation 1 (1000P/1200P)	4
		10149	Side Port Square Seal - Generation 1 (1000P/1200P)	4
		10495	Side Port Seal - Generation 2	4
		10496	Side Port Gasket Seal - Generation 2	4
		10424	Side Port O-Ring Seal - Generation 2	8
		20111	Retaining Ring	4
		20456	Side Port Nut	4
		20280	Side Port Nut Shim	4
		20439	Side Port Nut Screw	8
		10175	Head Seal	2
		10181	Permeate Port Seal	2
		10182	Adaptor Seal	4
		10902	2" Side Port Seal Kit - Part Identification Sheet	1
2.5"	10903	10168	Side Port Curved Seal - Generation 1 (600P)	4
		10154	Side Port Square Seal - Generation 1 (600P)	4
		10164	Side Port Curved Seal - Generation 1 (1000P/1200P)	4
		10150	Side Port Square Seal - Generation 1 (1000P/1200P)	4
		10497	Side Port Seal - Generation 2	4
		10498	Side Port Gasket Seal - Generation 2	4
		10425	Side Port O-Ring Seal - Generation 2	8
		20112	Retaining Ring	4
		20457	Side Port Nut	4
		20285	Side Port Nut Shim	4
		20439	Side Port Nut Screw	8
		10175	Head Seal	2
		10181	Permeate Port Seal	2
		10182	Adaptor Seal	4
		10903	2.5" Side Port Seal Kit - Part Identification Sheet	1

3"	10904	10162-1	Side Port Curved Seal - Generation 1 (1000P/1200P)	4
		10160	Side Port Square Seal - Generation 1 (1000P/1200P)	4
		10491	Side Port Seal - Generation 2	4
		10490	Side Port Gasket Seal - Generation 2	4
		20303	Side Port Gasket	4
		10392	Side Port O-Ring Seal - Generation 2	8
		20125	Retaining Ring	4
		20458	Side Port Nut	4
		20286	Side Port Nut Shim	4
		20439	Side Port Nut Screw	8
		10175	Head Seal	2
		10181	Permeate Port Seal	2
		10182	Adaptor Seal	4
		10904	3" Side Port Seal Kit - Part Identification Sheet	1

IV. Side Port Seal Kits (For one side port only)

Size	Side Port Seal Kits-150P/300P/450P			
	Kits code	Part No. & Description		QTY
1.5"	11018	10169	Side Port Curved Seal - Generation 1	1
		10155	Side Port Square Seal - Generation 1	1
		10615	Side Port Seal - Generation 2	1
		10423	Side Port O-Ring Seal - Generation 2	2
		20113	Retaining Ring	2
		11018	1.5" Side Port Seal Kit	
2"	11019	10167	Side Port Curved Seal - Generation 1	1
		10153	Side Port Square Seal - Generation 1	1
		10613	Side Port Seal - Generation 2	1
		10424	Side Port O-Ring Seal - Generation 2	2
		20111	Retaining Ring	2
		11019	2" Side Port Seal Kit	
2.5"	11020	10168	Side Port Curved Seal - Generation 1	1
		10154	Side Port Square Seal - Generation 1	1
		10614	Side Port Seal - Generation 2	1
		10425	Side Port O-Ring Seal - Generation 2	2
		20112	Retaining Ring	2
		11020	2.5" Side Port Seal Kit	
3"	11021	10162	Side Port Curved Seal - Generation 1	1
		10159	Side Port Square Seal - Generation 1	1
		10499	Side Port Seal - Generation 2 (300P)	1
		10447	Side Port Gasket Seal - Generation 2 (300P)	1
		10709	Side Port Seal - Generation 2 (300P/450P)	1
		10710	Side Port Gasket seal - Generation 2 (300P/450P)	1
		10392	Side Port O-Ring Seal - Generation 2	2
		20125	Retaining Ring	2
		20458	Side Port Nut	1
		20286	Side Port Nut Shim	1
		20439	Side Port Nut Screw	2
		11021	3" Side Port Seal Kit	
Size	Side Port Seal Kits-600P/1000P/1200P			
	Kits code	Part No. & Description		QTY
1.5"	11022	10169	Side Port Curved Seal - Generation 1 (600P)	1
		10155	Side Port Square Seal - Generation 1 (600P)	1
		10165	Side Port Curved Seal - Generation 1 (1000P/1200P)	1
		10151	Side Port Square Seal - Generation 1 (1000P/1200P)	1
		10493	Side Port Seal - Generation 2	1
		10494	Side Port Gasket Seal - Generation 2	1
		10423	Side Port O-Ring Seal - Generation 2	2
		20113	Retaining Ring	2
		20455	Side Port Nut	1
		20279	Side Port Nut Shim	1
		20439	Side Port Nut Screw	2
		11022	1.5" Side Port Seal Kit	

2"	11023	10167	Side Port Curved Seal - Generation 1 (600P)	1
		10153	Side Port Square Seal - Generation 1 (600P)	1
		10163	Side Port Curved Seal - Generation 1 (1000P/1200P)	1
		10149	Side Port Square Seal - Generation 1 (1000P/1200P)	1
		10495	Side Port Seal - Generation 2	1
		10496	Side Port Gasket Seal - Generation 2	1
		10424	Side Port O-Ring Seal - Generation 2	2
		20111	Retaining Ring	2
		20456	Side Port Nut	1
		20280	Side Port Nut Shim	1
		20439	Side Port Nut Screw	2
		11023	2" Side Port Seal Kit	1
		2.5"	11024	10168
10154	Side Port Square Seal - Generation 1 (600P)			1
10164	Side Port Curved Seal - Generation 1 (1000P/1200P)			1
10150	Side Port Square Seal - Generation 1 (1000P/1200P)			1
10497	Side Port Seal - Generation 2			1
10498	Side Port Gasket Seal - Generation 2			1
10425	Side Port O-Ring Seal - Generation 2			2
20112	Retaining Ring			2
20457	Side Port Nut			1
20285	Side Port Nut Shim			1
20439	Side Port Nut Screw			2
11024	2.5" Side Port Seal Kit			1
3"	11025	10162-1	Side Port Curved Seal - Generation 1 (1000P/1200P)	1
		10160	Side Port Square Seal - Generation 1 (1000P/1200P)	1
		10491	Side Port Seal - Generation 2	1
		10490	Side Port Gasket Seal - Generation 2	1
		20303	Side Port Gasket	1
		10392	Side Port O-Ring Seal - Generation 2	2
		20125	Retaining Ring	2
		20458	Side Port Nut	1
		20286	Side Port Nut Shim	1
		20439	Side Port Nut Screw	2
		11025	3" Side Port Seal Kit	1

B. End Port Vessels Only Kits

I. *Complete Head Assembly*

- Permeate Port Kits
- Feed/ Concentrate Port Kits
- Aluminum Bearing Plate
- Allen Screw (**Retaining Block on 600Psi and 1000Psi MPV**)

*****Three Turn Retaining Ring Not Included – Order Separately (20024, 20025, or 20434 Model Dependent)**

Complete Head Assembly Kit Options

	<u>150PSI</u>	<u>300PSI</u>	<u>450PSI</u>	<u>600PSI</u>	<u>1000PSI</u>	<u>1200PSI</u>
H	70530	70531	70532	70533	70534	
J	70562	70563	70564	70565	70566	
V	70567	70568	70569	70570	70571	
S	70588	70589	70590	70591	70592	
F	70535	70536	70537	70538	70539	
G	70545	70546	70547	70548	70549	
M	70540	70541	70542	70543	70544	
N	70593	70594	70595	70596	70597	

II. *Permeate Port and Feed Concentrate Port Kits*

- Permeate Port
- Head Seal
- Permeate Port Retaining Ring
- Permeate Port Seal
- Union Adaptor
- Union Nut
- Union Flat Seal
- Feed/Concentrate Port
- Feed/Concentrate Retaining Ring
- Feed/Concentrate Seal

Permeate Port Kit Options

	<u>150PSI</u>	<u>300PSI</u>	<u>450PSI</u>	<u>600PSI</u>	<u>1000PSI</u>	<u>1200PSI</u>
H	70674	70675	70676	70677	70678	
J	70679	70680	70681	70682	70683	
V	70694	70695	70696	70697	70698	
S	70699	70700	70701	70702	70703	
F	70684	70685	70686	70687	70688	
G	70689	70690	70691	70692	70693	
M	70704	70705	70706	70707	70708	
N	70709	70710	70711	70712	70713	

III. Complete MPV Seal/Retaining Ring Kits

Size	End Port Seal Kits			
	Kits code	Part No. & Description		QTY
150E/250E/300E	10905	10180	Feed/Concentrate Seal	4
		20108	Feed/Concentrate Retaining Ring	2
		10175	Head Seal	2
		10181	Permeate Port Seal	2
		10182	Adaptor Seal	4
		10905	150E/250E/300E – End Port Seal Kit – Part ID Sheet	
400E/450E	10906	10180	Feed/Concentrate Seal	4
		20119	Feed/Concentrate Retaining Ring	2
		10175	Head Seal	2
		10181	Permeate Port Seal	2
		10182	Adaptor Seal	4
		10906	400E/450E – End Port Seal Kit – Part ID Sheet	
600E	10907	10180	Feed/Concentrate Seal	4
		20120	Feed/Concentrate Retaining Ring	2
		10175	Head Seal	2
		10181	Permeate Port Seal	2
		10182	Adaptor Seal	4
		10907	600E – End Port Seal Kit – Part ID Sheet	
1000E/1200E	10908	10180	Feed/Concentrate Seal	4
		20118	Feed/Concentrate Retaining Ring	2
		10175	Head Seal	2
		10181	Permeate Port Seal	2
		10182	Adaptor Seal	4
		10908	1000E/1200E – End Port Seal Kit – Part ID Sheet	

C. Side Port and End Port Vessels Common Kits

I. Saddle Kits

Saddle Kit Options

	<u>Part No.</u>
Saddle	10141-1
Strap & Strap Nut	20123
Strap Screw	20129
Strap Protective Jacket	10188
Complete Saddle Kit	20276

II. Head Removal Tool Kits

Head Removal Tool Kit Options



	<u>Part No.</u>
Head Removal Tool – SS304L H/G/F/J/V/S/M/N/UF	20739
Head Removal Tool – Steel H/G/F/J/V/S	20756

III. Adaptor Shim Kits

Adaptor Shim Kit Options



	<u>Part No.</u>
Shim 1mm	10314
Shim 2mm	10279
Shim 3mm	10280
Shim 4mm	10281
Shim 5mm	10282
Complete Shim Kit	11317